

TCPR1 Antibody (N-term)
Affinity Purified Rabbit Polyclonal Antibody (Pab)
Catalog # AP6845a

Specification

TCPR1 Antibody (N-term) - Product Information

Application	FC, WB, IHC-P,E
Primary Accession	Q7Z6L1
Reactivity	Human
Host	Rabbit
Clonality	Polyclonal
Isotype	Rabbit IgG
Antigen Region	162-189

TCPR1 Antibody (N-term) - Additional Information

Gene ID 25851

Other Names

Tectonin beta-propeller repeat-containing protein 1, TECPR1, KIAA1358

Target/Specificity

This PALA antibody is generated from rabbits immunized with a KLH conjugated synthetic peptide between 162-189 amino acids from the N-terminal region of human TCPR1.

Dilution

FC~~1:10~50

WB~~1:1000

IHC-P~~1:50~100

E~~Use at an assay dependent concentration.

Format

Purified polyclonal antibody supplied in PBS with 0.09% (W/V) sodium azide. This antibody is purified through a protein A column, followed by peptide affinity purification.

Storage

Maintain refrigerated at 2-8°C for up to 2 weeks. For long term storage store at -20°C in small aliquots to prevent freeze-thaw cycles.

Precautions

TCPR1 Antibody (N-term) is for research use only and not for use in diagnostic or therapeutic procedures.

TCPR1 Antibody (N-term) - Protein Information

Name TECPR1

Synonyms KIAA1358

Function Tethering factor involved in autophagy. Involved in autophagosome maturation by promoting the autophagosome fusion with lysosomes: acts by associating with both the ATG5-ATG12 conjugate and phosphatidylinositol-3-phosphate (PtdIns(3)P) present at the surface of autophagosomes. Also involved in selective autophagy against bacterial pathogens, by being required for phagophore/preautophagosomal structure biogenesis and maturation.

Cellular Location

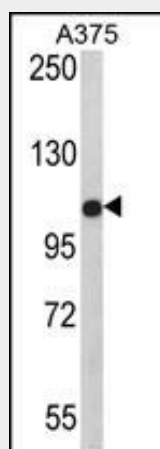
Cytoplasmic vesicle, autophagosome membrane. Lysosome membrane. Note=Localizes to Lysosome membranes, and binds PtdIns(3)P at the surface of autophagosome. Localizes to autolysosomes, a vesicle formed by the fusion between autophagosomes and lysosomes

TCPR1 Antibody (N-term) - Protocols

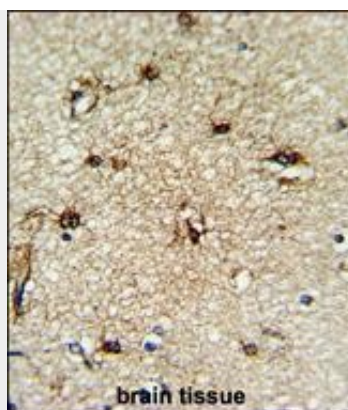
Provided below are standard protocols that you may find useful for product applications.

- [Western Blot](#)
- [Blocking Peptides](#)
- [Dot Blot](#)
- [Immunohistochemistry](#)
- [Immunofluorescence](#)
- [Immunoprecipitation](#)
- [Flow Cytometry](#)
- [Cell Culture](#)

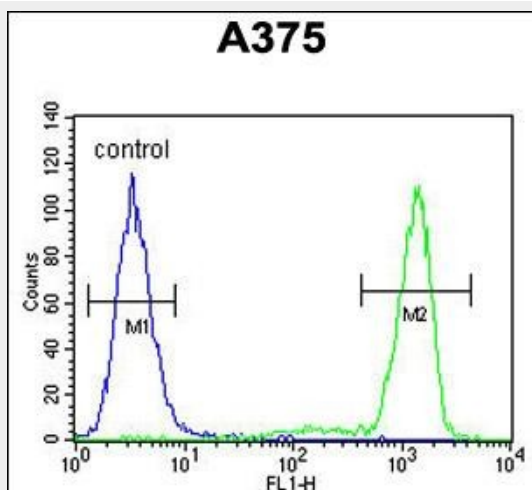
TCPR1 Antibody (N-term) - Images



Western blot analysis of TCPR1 Antibody (N-term) (Cat. #AP6845a) in A375 cell line lysates (35ug/lane). TCPR1 (arrow) was detected using the purified Pab.



Formalin-fixed and paraffin-embedded human brain tissue reacted with TCPR1 Antibody (N-term), which was peroxidase-conjugated to the secondary antibody, followed by DAB staining. This data demonstrates the use of this antibody for immunohistochemistry; clinical relevance has not been evaluated.



TCPR1 Antibody (N-term) (Cat. #AP6845a) flow cytometric analysis of A375 cells (right histogram) compared to a negative control cell (left histogram). FITC-conjugated goat-anti-rabbit secondary antibodies were used for the analysis.

TCPR1 Antibody (N-term) - References

Scherer, S.W., et.al., Science 300 (5620), 767-772 (2003)